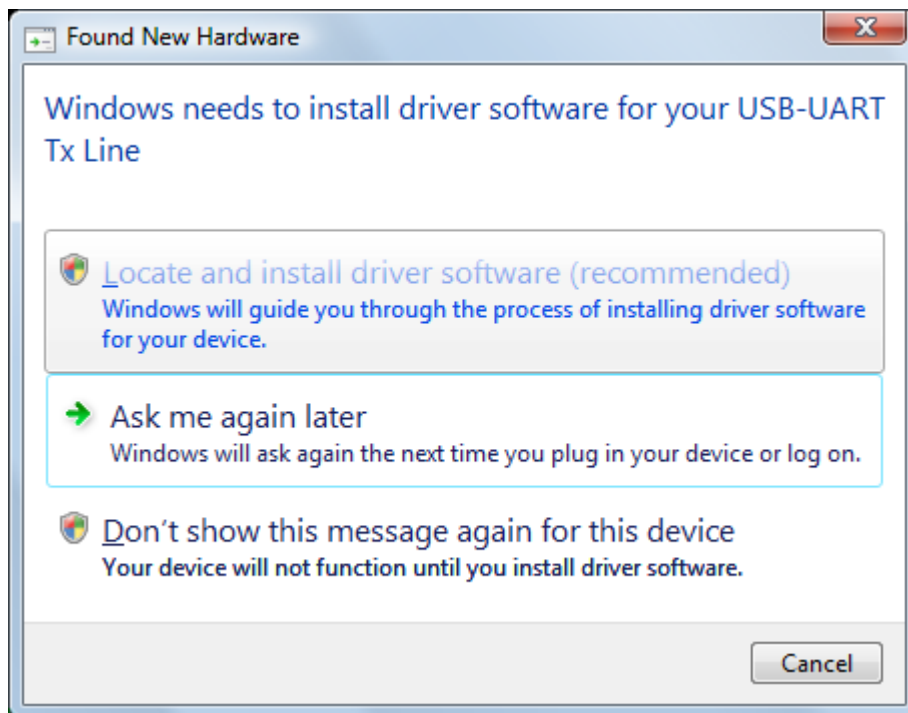
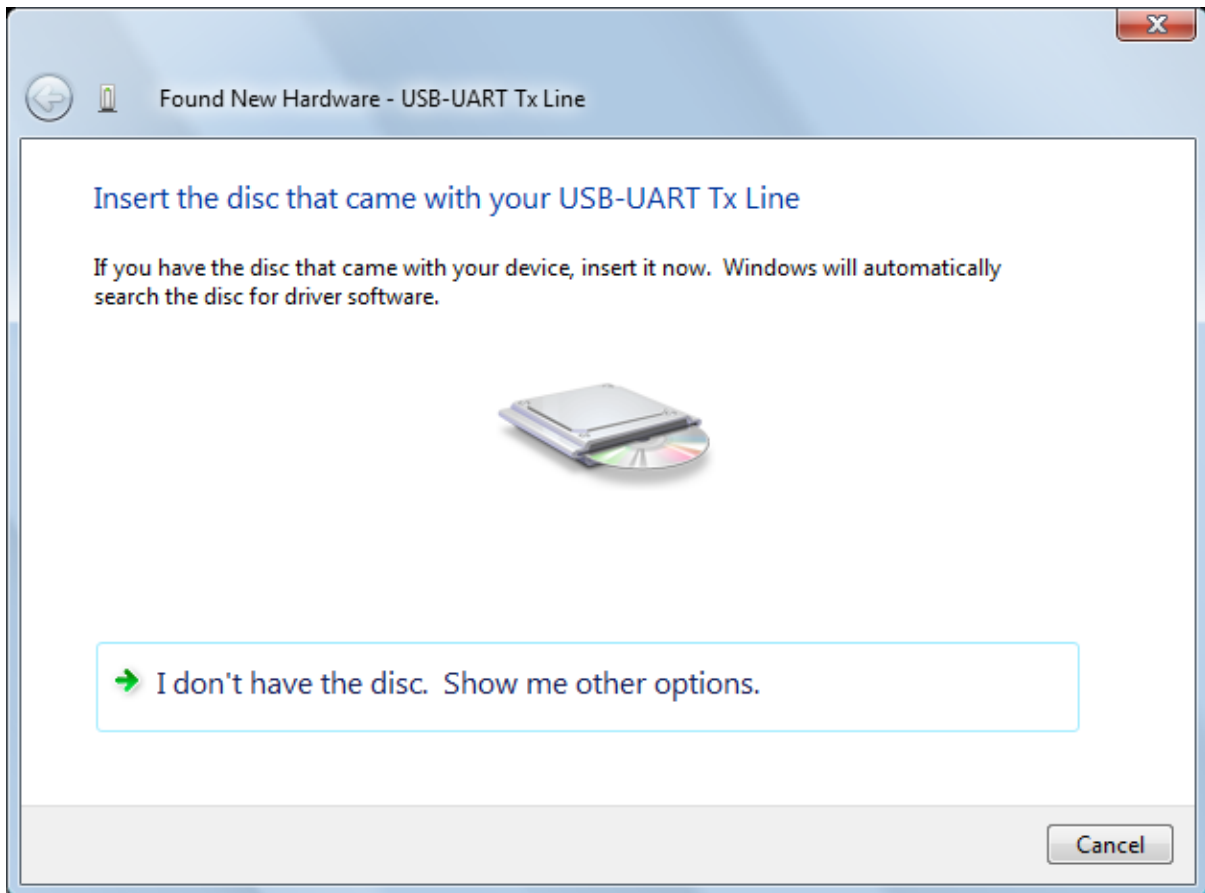


Remzibi USB to Serial Adaptor Vista Installation Instructions

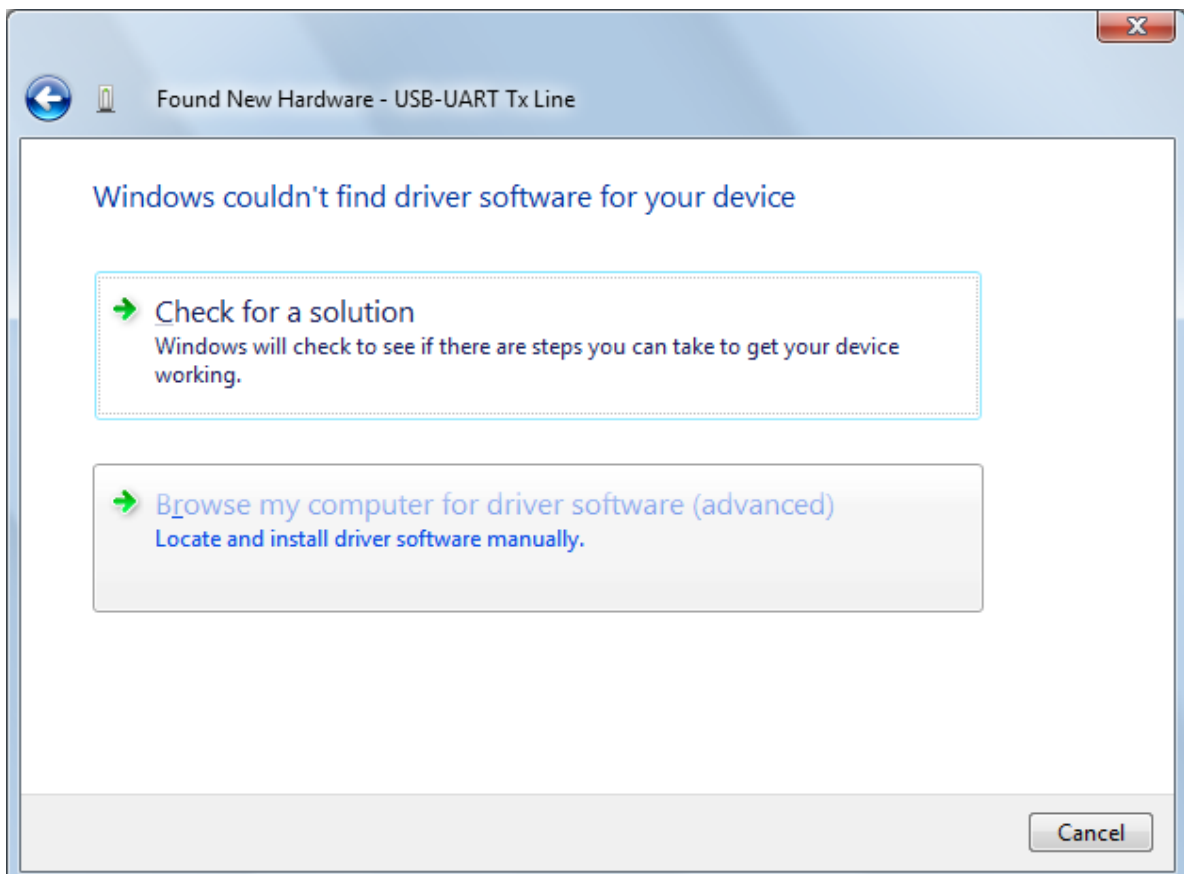
1. First of all extract the OTi6858driver.zip Zip file somewhere obvious. I'll use the desktop in my example. Nb. Do NOT run the Setup6858.1.12.35.exe file contained here - it won't work on Vista.
2. Once you've extracted the files from the Zip to a suitable location plug in your USB to Serial adaptor and the screen below will popup. Choose the top option "Locate and install driver software (recommended)"



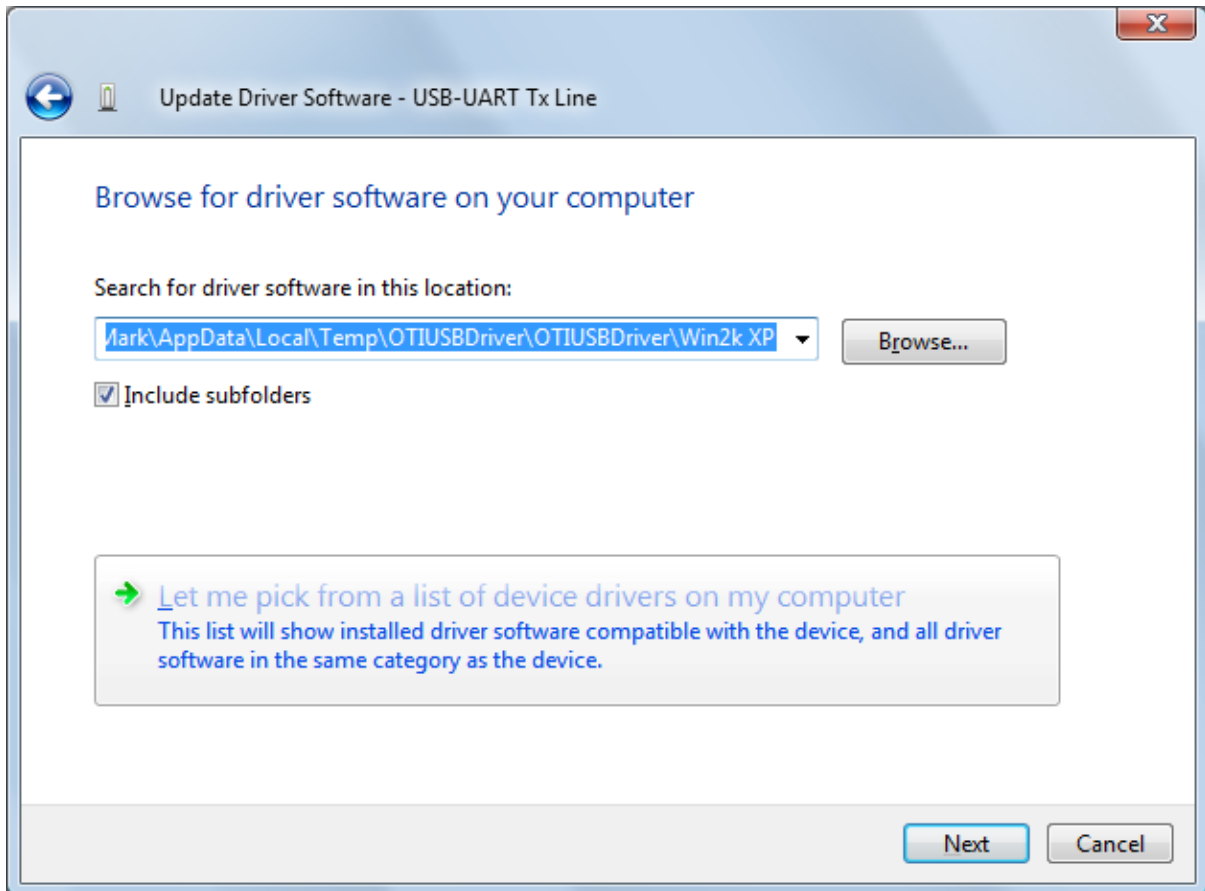
3. The screen below will then show. Choose "I don't have the disk. Show me other options."



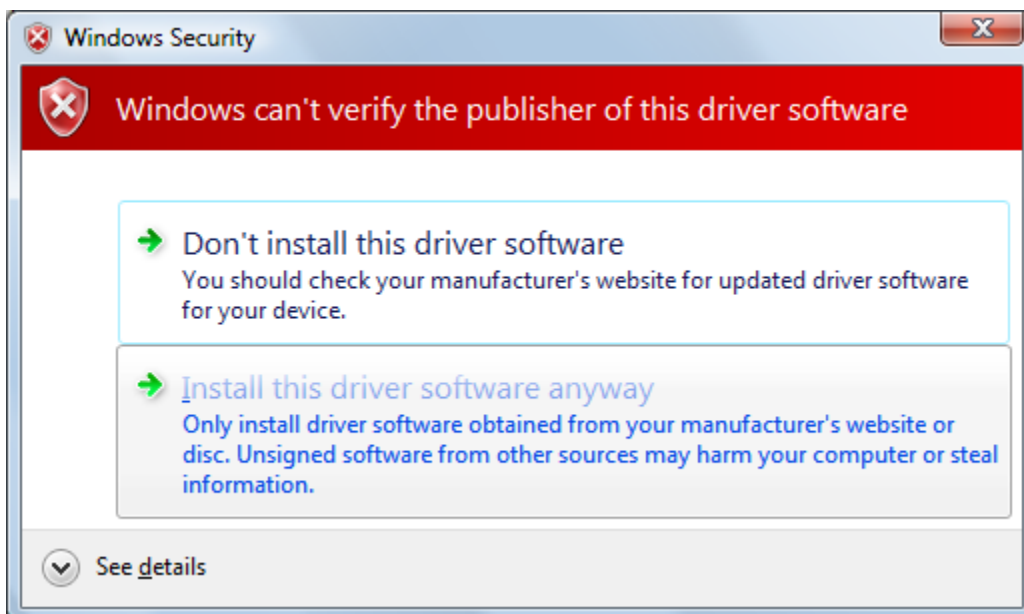
4. At the next screen choose "Browse my computer for driver software (advanced)":



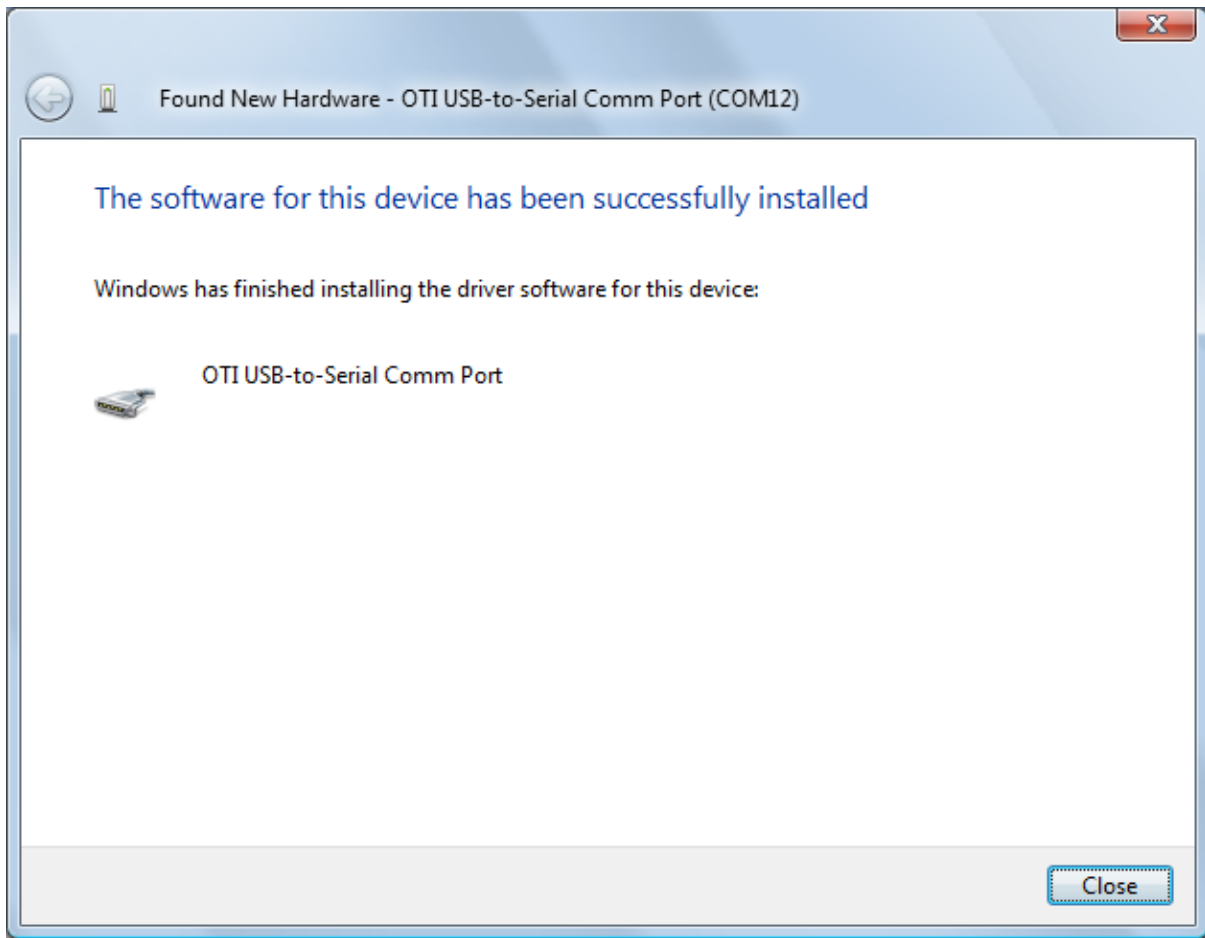
5. On the next screen browse to the folder that you extracted in step 1 and go into the subfolders 1.12.35\Drivers\Win2k and press next:



6. At the next screen click "Install this driver software anyway":



7. You should now see the success message below:



8. Your device manager screen should now look like this (the COM port will vary):

